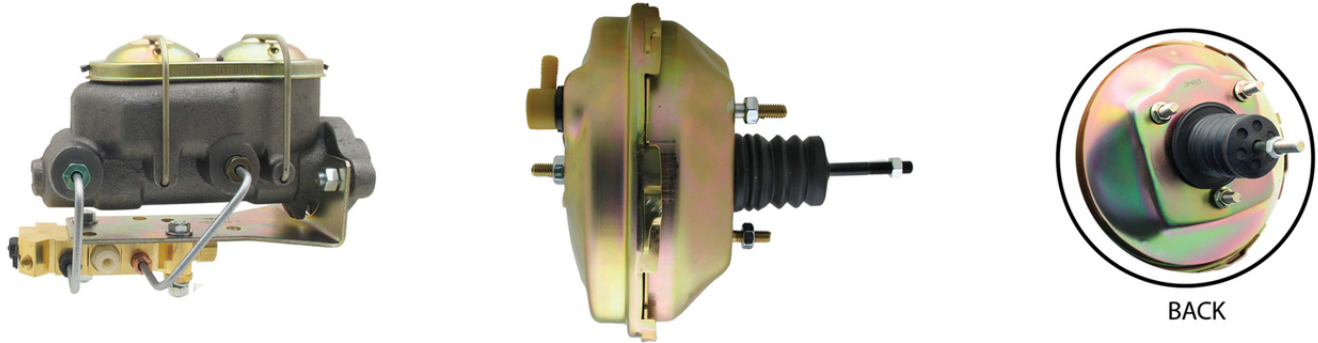


1962-1967 NOVA BOOSTER CONVERSION KIT INSTALLATION INSTRUCTIONS



WARNING Proper operation of your brakes is essential for your safety and the safety of others. Any brake service should be performed **ONLY** by persons experienced in the installation and proper operation of brake systems. It is the responsibility of the person installing any brake component or kit to determine the suitability of the component or kit for the particular application. After installation, and before operating your vehicle, be sure to test the function of the brakes under controlled conditions. **DO NOT DRIVE WITH UNTESTED BRAKES!**

IMPORTANT Take time to read all the literature that came with this kit. Before beginning installation check the provided list of parts against what you received to ensure that all parts are present. While this kit was designed to make the process of changing brake parts as simple as possible, **NOTE: WITH SOME KITS IT MAY BE NECESSARY TO MAKE MINOR CHANGES TO YOUR CAR! READ ALL WARRANTY DISCLAIMERS AND RETURN POLICIES INCLUDED IN THIS KIT PRIOR TO INSTALLATION!**

NOTE Always utilize safety restraints when operating the vehicle. The installation of disc brakes will require the use of 15" wheels. Any attempt to install disc brake with a 14" wheel will be the customer's responsibility.

NOTE This kit is an aftermarket solution. It is not intended to be a direct installation or OEM replacement. Due to changes in production in certain years, your car may require modifications beyond these instructions for this kit to install properly.

NOTE: ALWAYS REFER TO THE VEHICLE OWNER'S MANUAL FOR CORRECT TORQUE SPECIFICATIONS WHEN INSTALLING KIT.

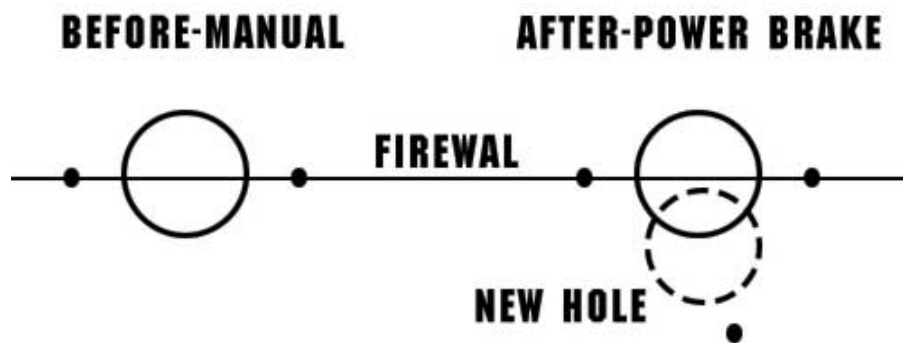
REMOVING THE ORIGINAL POWER BOOSTER

BEFORE YOU BEGIN, READ THIS:

You are urged to refer to a suitable service manual when attempting to make repairs. If you do not have such a manual or lack the experience to make such repairs, you should use the services of a qualified technician.

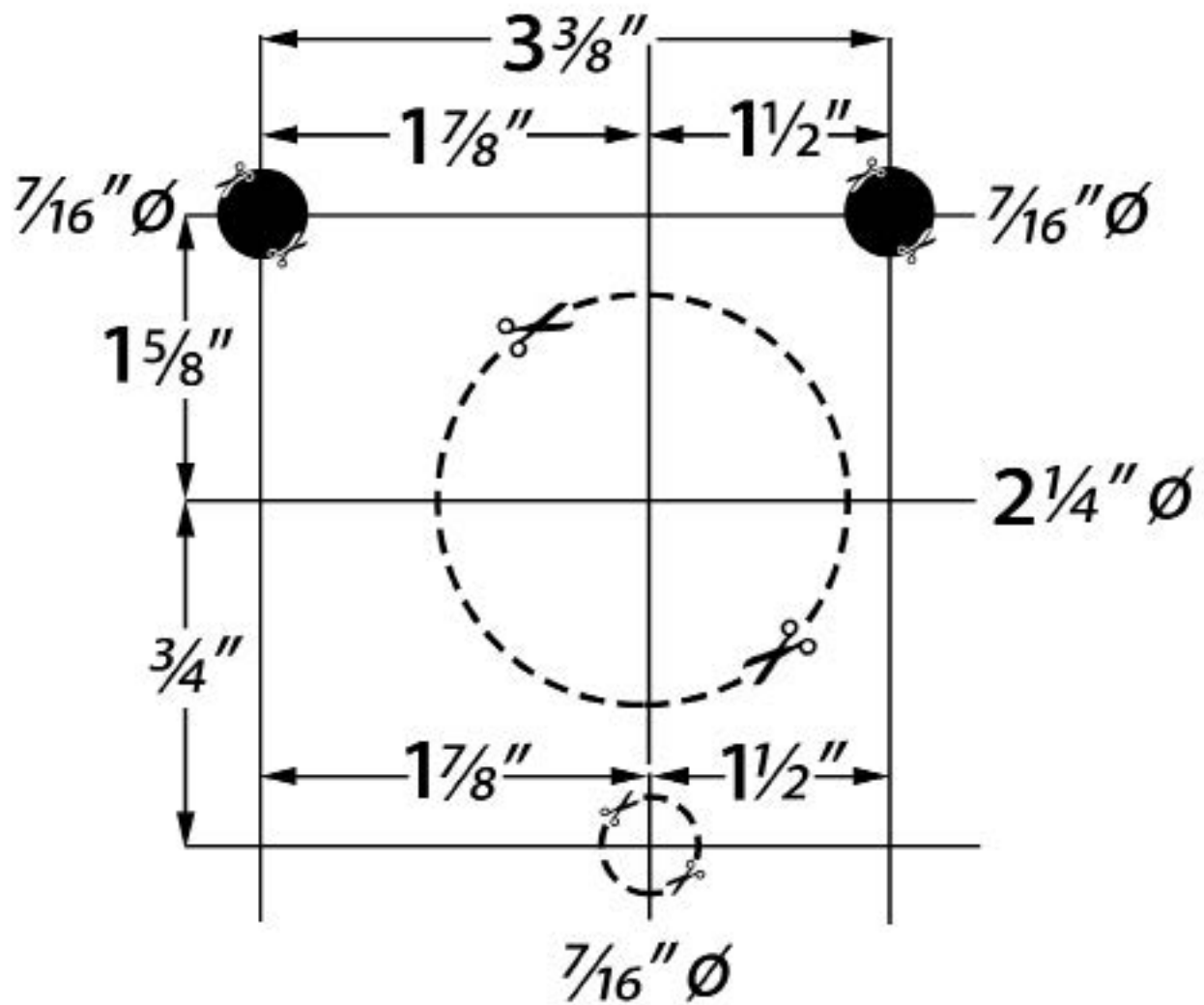
NOTE: Before beginning work, be sure vehicle is parked in a level area and that wheels are chocked to prevent unintentional movement.

1. Remove necessary brake lines from the master cylinder and set aside.
2. Remove entire assembly from the firewall.
3. Grind down stud welds in passenger compartment. Using a hammer knock out existing studs bend back and forth using vice grips until the weld breaks. New stud holes should measure 7/16"
4. Use a piece of cardboard and make a template for your brake booster. Use provided template on page 3.
5. We suggest using a 2 1/4" hole saw to drill out the hole necessary to fit the hub to the firewall. (See Diagram 1.1) Be sure that when you drill into the firewall you check to see that you are not drilling into anything on the opposite side. The offset of this third mounting bracket should be enough to miss any major components.
6. Mount brake booster to firewall and use included clevis to connect to your brake pedal. When converting from manual to power brakes you may need to relocate the brake pedal mounting hole to accept the new booster rod. You will have to drill a new hole on the pedal arm to accept the clevis approx. 1" lower than the original position.
7. Attach the master cylinder to the brake booster.
8. Attach the vacuum hose to your engine (not provided)
9. Remember any time you adjust or remove the brake lines from your master cylinder you will have to bleed the entire brake system.
10. Look for leaks, test brakes, enjoy new brake system!



Diag. 1.1

Firewall Template



Master Cylinder/ Valve Instructions

